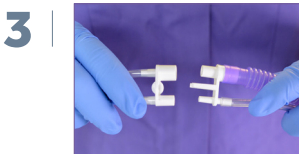




Size the patient for prong or mask.



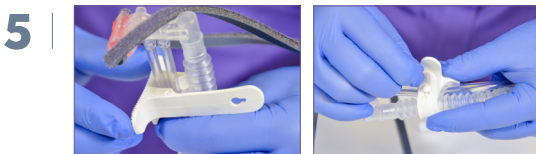
Fit the indicated colour coded nCPAP prong or mask to the nCPAP generator.



Fit nCPAP generator pressure and flow lines to AquaVENT® Neo Circuit using dedicated connector provided.



To fit support cradle, approximate distance from nares to brow.



Attach support cradle to nCPAP generator. Ensure pressure and gas supply lines are fitted in slot provided and exhaust line is secured above.



Apply nCPAP prong or mask and secure support cradle to bonnet.



Apply the grey securement lines to Velcro® tabs on the bonnet. Ensure prong or mask is securely fitted in nares but NOT overtight.