

Neria™ Guard infusion set



Neria™ Guard is an all-in-one, automatic infusion set with an integrated inserter and a soft cannula.¹ With just a few user steps and a retractable inserter needle, it has been designed to support simplicity and home treatment.¹

Soft cannula lengths	Tubing lengths	Priming volumes
6 and 9 mm	12, 30, 60, 80 and 110 cm	12 cm ~ 0.04 ml 30 cm - 0.06 ml 60 cm ~ 0.10 ml 80 cm ~ 0.12 ml 110 cm ~ 0.15 ml

The Neria™ Guard infusion sets are sold in boxes containing 10 sets.

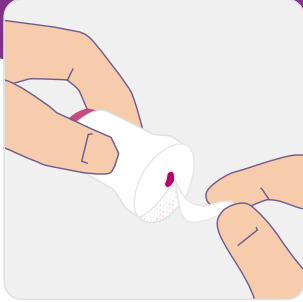
Product specifications

Cannula	Soft
Insertion angle	90 degrees (straight in)
Disconnection	Yes, at site
Introducer needle gauge	G27
Soft cannula diameter	0.68 mm (≈ G23)
Adhesive	Built-in, non-woven polyester, acrylic adhesive
Hidden needle	Yes, needle not visible before, during and after insertion
Insertion device	Yes, incorporated in the product

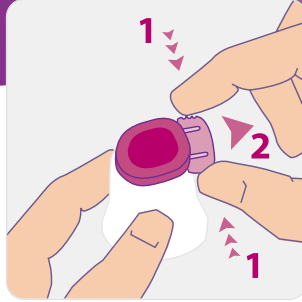
References

1. Convatec IC, data on file, D012-002912, 2023.

Neria™Guard infusion set user steps



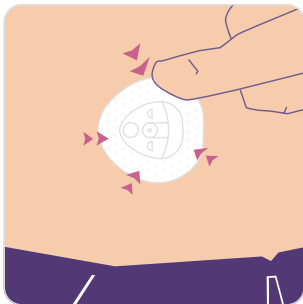
Step 1.
Pull gently to remove the paper from the adhesive, being careful not to touch the adhesive.



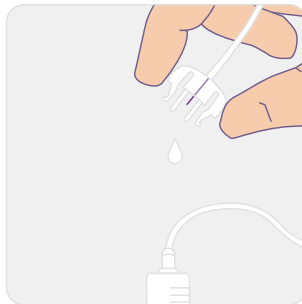
Step 2.
Remove the safeguard from the insertion device by gently squeezing the sides of the safeguard and pulling it straight out.



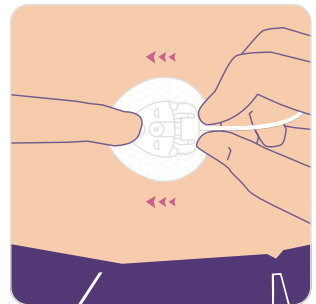
Step 3.
Position the insertion device on the skin and press the red activation button completely down to insert the infusion set. The insertion device will automatically release from the insertion site.



Step 4.
Secure the adhesive by pressing the tape down onto the skin.



Step 5.
Connect to the pump and prime the tubing according to instructions provided by the pump manufacturer.



Step 6.
Place a finger on the cannula housing while pushing the site connector straight in until you hear a "click". Check the infusion site frequently.

DISCLAIMER

Please note that this guide only illustrates some of the steps to follow when inserting a Neria™Guard infusion set and it is not a substitute for reading the full instructions for use that comes with the product. When using the product for the first time, do so in the presence of your healthcare professional.

AP-68007-GBL-ENG-v1 (v1.1)

© 2024 Convatec

Neria is a trademark of Unomedical A/S. The Convatec name, Hug icon and strapline are trademarks of Convatec.