

### Guidance For Use

This guidance should be read in conjunction with the IFU supplied with the specific Breathing Circuit, the Flow Driver and Heater Humidifier

#### TO SET UP SYSTEM

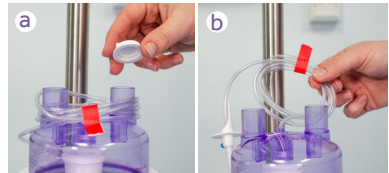
##### Step 1

Insert humidification chamber onto heater humidifier plate



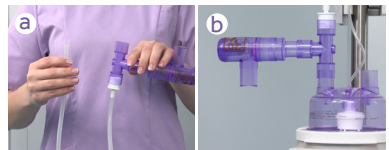
##### Step 2

Remove dust caps (a) and unwind the water feed line (b)



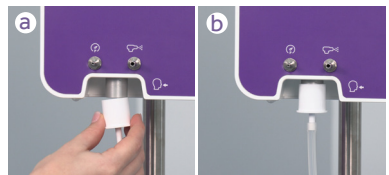
##### Step 3

Attach the overpressure relief valve with unheated humidification limb to chamber



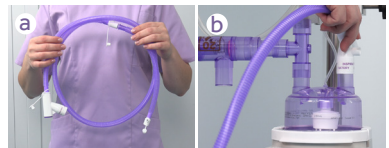
##### Step 4

(a) If required use adapter  
(b) Attach humidification limb to FD140i gas flow outlet



##### Step 5

Attach heated inspiratory limb to the humidification chamber



### Guidance For Use

This guidance should be read in conjunction with the IFU supplied with the specific Breathing Circuit, the Flow Driver and Heater Humidifier

#### Step 6

- a) Connect heater wire cable
- b) Attach temperature probes to the chamber (a) and airway ports (b)



#### Step 7

- Connect the manometer line to the luer lock port on the inspiratory limb



#### Step 8

- Fit the manometer line to the FD140i pressure measurement port



#### Step 9

- Insert the Bubble CPAP generator jar into a clamp



#### Step 10

- Attach the unheated expiratory limb with water trap to the Bubble CPAP generator jar



#### Step 11

- Connect the patient ends of the inspiratory and expiratory limbs to a suitable dual limb patient interface



### Guidance For Use

This guidance should be read in conjunction with the IFU supplied with the specific Breathing Circuit, the Flow Driver and Heater Humidifier

#### TO COMMENCE THERAPY

##### Step 1

Turn on the FD140i and select Bubble PAP mode



##### Step 2

Set desired Flow, FiO<sub>2</sub> and alarm settings



##### Step 3

Fill the Bubble CPAP generator jar to the overflow water level with water



##### Step 4

Introduce sterile water to the humidification chamber via (a) the water fill line and a sterile water bag or (b) manual filling



##### Step 5

Turn on heater humidifier



##### Step 6

Ensure heater is set to invasive mode  
 -chamber temp 37°C  
 -airway temp 40°C



##### Step 7

Set the desired PEEP using the straw in the bubble generator jar



##### Step 8

Commence Bubble PAP therapy on the FD140i



##### Step 9

Fit the patient interface to the baby to deliver therapy